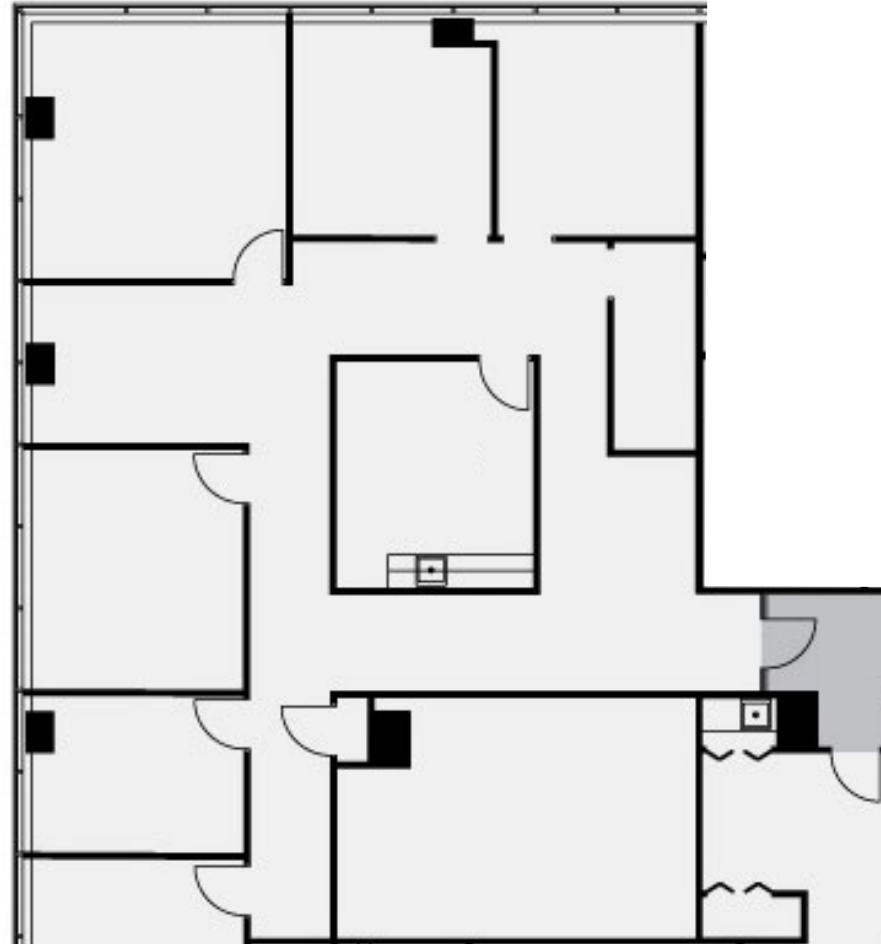


Doral Center

2DC

3750 NW 87th Ave.



2nd Floor
Suite 220
3,153 SF

Leasing Contact:

Gordon Messinger
Executive Vice President
gordon.messinger@cbre.com
+1 305 381 6441

Randy Carballo
Senior Vice President
randy.carballo@cbre.com
+1 305 299 9163

CBRE