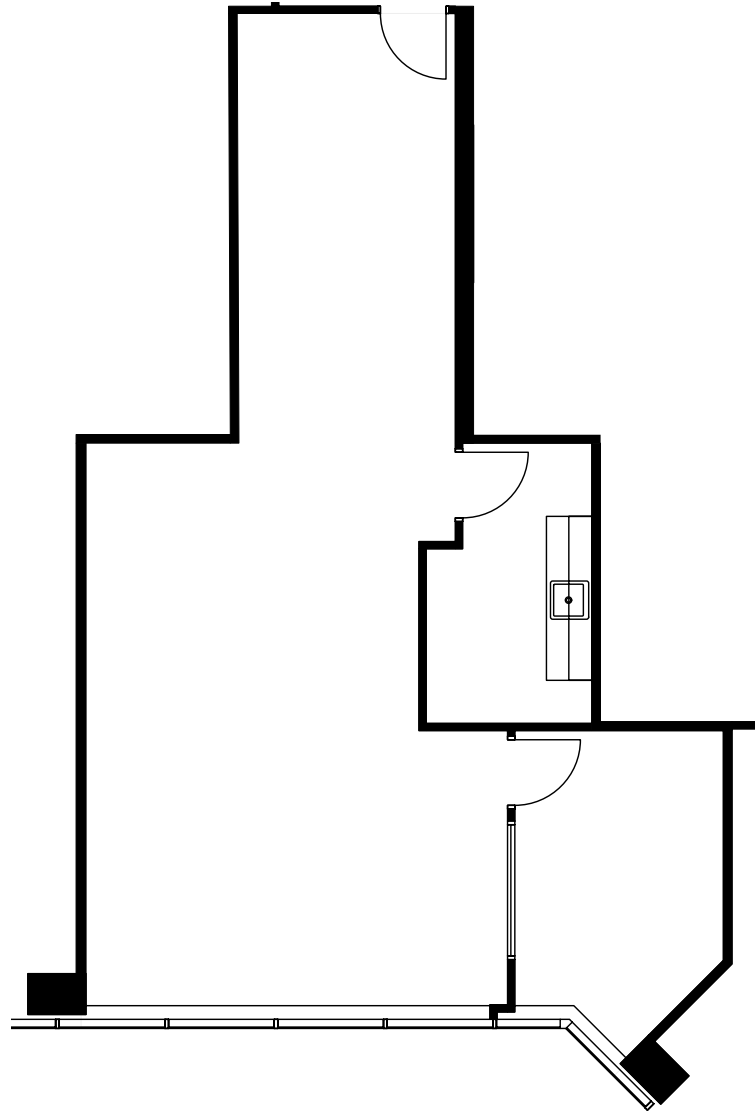


# Doral Center

# 2DC

3750 NW 87<sup>th</sup> Ave.

4<sup>th</sup> Floor  
Suite 420  
1,200 SF



Leasing Contact:

**Gordon Messinger**  
Executive Vice President  
gordon.messinger@cbre.com  
+1 305 381 6441

**Randy Carballo**  
Senior Vice President  
randy.carballo@cbre.com  
+1 305 299 9163

# CBRE